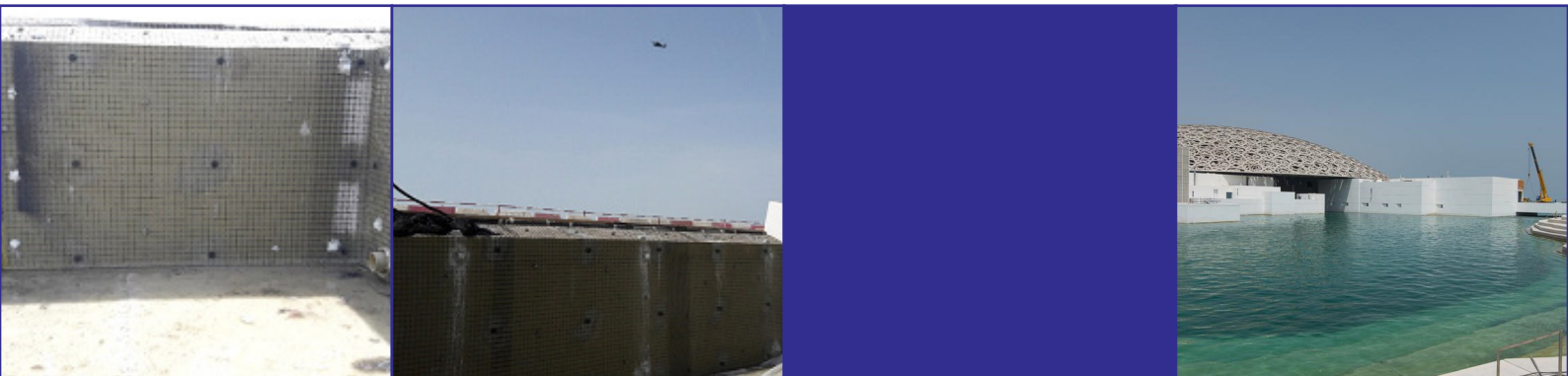


# Reinforcement of Tank Walls



## Details

Location	Louvre Museum, UAE.
Description	Reinforcement of tank walls.
Date of project	2015.
Where FRP composites are used and why	The tank wall was reinforced with mesh ROCKMESH. For mounting the grid THERMOSAVE composite dowels were used.
Type of composite used	Basalt fibre reinforced polymer.

## Contact